



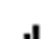
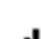





-  LTE GSM DCS UMTS BROADBAND ANTENNA
-  HIGHT GAIN DIRECTIONAL PATTERN
-  CIRCULAR POLARIZATION
-  FULL FIBERGLASS FIREPROFF RADOME\*
-  HIGHT MECHANICAL PERFORMANCE
-  ALL METAL PARTS ARE D.C. GROUNDED
-  FOR TUNNEL RAILWAY HIGHWAY SUBWAY

Antenna direzionale con polarizzazione CIRCOLARE ad alto guadagno MULTIBANDA LTE,GSM,DCS,UMTS 1710÷ 2700 Mhz. Costruita di serie con copertura di protezione contro urti e agenti atmosferici in vetroresina \*anche in versione ignifuga. Tutte le parti metalliche l'antenna sono elettricamente a massa. Studiata principalmente per la copertura radio in gallerie autostradali ferroviarie e metropolitane.

High-gain directional antenna with CIRCULAR polarization, for LTE, GSM,DCS,UMTS 1710 ÷ 2700 MHz. Designed and mainly used for railway, underground and motorway tunnels radio coverage. Created with a protective cover in fiberglass to shield the antenna against shocks and atmospheric agents, \*cover also available in a fireproof version. All metallic parts of the antenna are electrically grounded.

### ELECTRICAL DATA

<b>Frequency range A</b>	MHz	1710 ÷ 2700
<b>Bandwidth</b>	MHz	990
<b>Gain max.</b>	dBi	17
<b>Return loss</b>	dB	≤ -14
<b>Nominal impedance</b>	Ω	50
<b>Polarization</b>	Ω	Circular R.
<b>beamwidth typ.</b>	-3 dB	20
<b>Front back ratio typ.</b>	dB	25
<b>Max Power</b>	W	100
<b>Connector</b>		4.3/10
<b>Lightning protection</b>	All metal parts are D.C. grounded	

### MECHANICAL DATA

<b>Dimension length</b>	mm	∅ 220 x 1320
<b>Weight</b>	kg	4.9
<b>Lat. Wind load 150km/h</b>	N	315
<b>Ice protection</b>	fiberglass full radome	
<b>Mounting</b>	∅ 40x80	

### MATERIALS

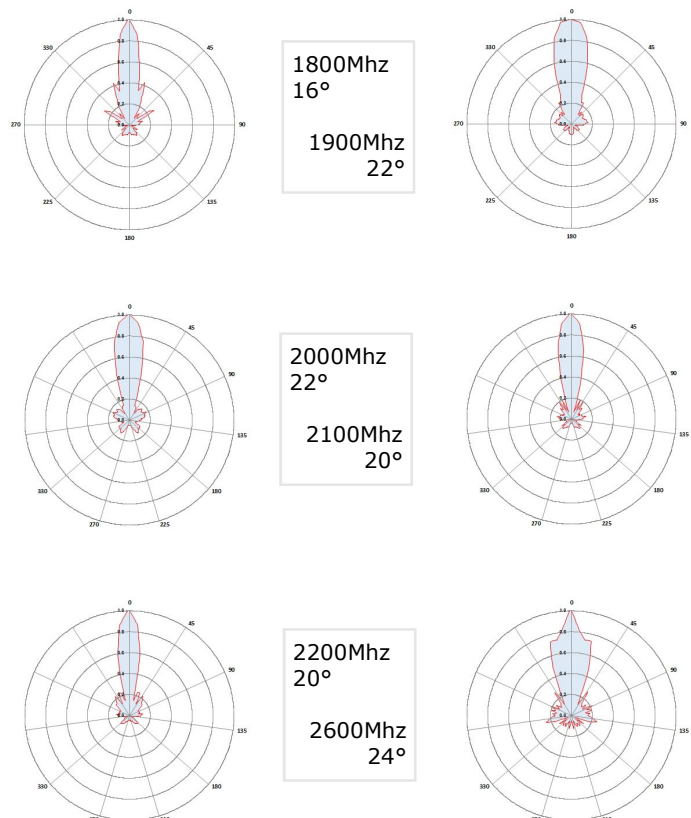
Aluminium – Teflon – Brass – Stainless steel

### ACCESSORIES

CODE	TYPE	DIMEN.
AR1061T	2 clamps	∅ 40x114

### PACKAGING INFORMATIONS

250 x 250 X 1500



In relazione alle normative in materia di responsabilità sui prodotti, segnaliamo che nel caso di utilizzo delle nostre antenne in condizioni operative particolari, quali ad esempio forti sollecitazioni dinamiche dovute a vento, vibrazioni o deformazioni delle strutture di sostegno, si possono verificare rotture del prodotto stesso e/o la caduta a terra. L'installatore che deve essere altamente qualificato, deve conoscere le normative nazionali di sicurezza in vigore, deve seguire le informazioni contenute nelle nostre istruzioni, deve verificare sempre l'adeguatezza del prodotto stesso alle condizioni operative del sito di installazione e deve controllare l'installazione operando la manutenzione periodica dell'impianto. ---- In relation to the laws concerning product liability, we notify you that in case you use our antennas in severe operative conditions such as, for example, strong wind, vibrations or distortions of the support structure, the product can break and/or fall down. The person who install the product must be skilled, must know the national security law in force, must follow the product instructions, must check that the product is compatible with the installation site and must control the installation with periodical maintenance.